



山东昌润达汽车科技有限公司  
Shandong Changrunda Automotive Technology Co., Ltd

# Products Catalogue

2024

Company introduction

Concentric Share Win-win Grateful for you

Every trust must not be disappointed



hicles, sedan transport vehicles, dump trucks, bulk cement trucks, cement mixer trucks, and special vehicles, all of which have reached the international leading level. We have passed the CCC certification from the China Quality Certification Center and also passed the ISO9001:2000 quality system, specialized vehicles, and special vehicles produced by the company have novel designs, unique designs, reasonable structures, and are sturdy and durable, making them the preferred "trustworthy" products for customers. They have been awarded honors such as "Advanced Private Enterprise", "Star Private Enterprise", "Consumer Satisfaction Unit", and "Contract abiding and Trustworthy Enterprise" by provinces, cities, and counties. All employees of the company warmly welcome friends from all over the world to come to the company to purchase high-quality and reliable cars.

Shandong Changrunda Automotive Technology Co., Ltd  
2024



山东昌润达汽车科技有限公司

Shandong Changrunda Automotive Technology Co., Ltd

South section of National Highway 220 in Qianpu Town Industrial Park, Liangshan County, Jining City, Shandong Province

# Products Catalogue

## Contents

1. Howo tractor 6x4 400HP.....	3
2. Howo dump truck 6x4 400HP.....	5
3. 3 Axles 40FT Skeleton Semi Trailer.....	7
4. 3 Axles 45FT Skeleton Semi Traile.....	8
5. Dock skeleton semi-trailer.....	9
6. Tri-axle Flatbed Semi-trailer.....	11
7. Tri-axle cargo semi-trailer.....	12
8. 3 Axles Low-bed Semi-trailer.....	13
9. Cargo transport semi trailer.....	15
10.Car Carrier Semi-trailer.....	16
11.3 Axles Dump Trailer.....	18
12.3 axle oil tanker semi trailer.....	20
13.Fuel Tank Truck.....	22
14.Bulk Cement Tank Semi-trailer.....	24
15.Concrete Mixer Truck.....	25
16.FIRE TRUCK.....	26
17.Truck with loading crane.....	28



山东昌润达汽车科技有限公司

Shandong Changrunda Automotive Technology Co., Ltd

South section of National Highway 220 in Qianpu Town Industrial Park, Liangshan County, Jining City, Shandong Province

## HOWO 6x4 TRACTOR 400HP



### SPECIFICATION

VEHICLE SPECIFICATION	DESCRIPTION
Truck Model	ZZ42573249W
Type of Vehicle	TRACTOR TRUCK
Truck Brand	SINOTRUK—HOWO
Driving Position	Right /Left hand Driving
Fuel tanker capacity (L)	400
The Total Mass	50,000kg
Dead Weight	8800
Max speed (km/h) (km/h)	102
Color	Optional
Chassis & Add Components	
Frame Details	High-Strength U-profile ladder frame with section of 300*90*8mm and reinforced subframe, all cold riveted cross members.
Dimension(Lx W xH) (mm)	6985x2496x3450
Approaching angle/Departure angle (°)	16/70
Overhang(front/rear) (mm)	1500/725
Wheel base (mm)	3225+1350
Engine	
Model	WP12.400E201
Power	400hp/296kw.2000r/min
Emission	EURO II
Displacement(L)	11.896



山东昌润达汽车科技有限公司

Shandong Changrunda Automotive Technology Co., Ltd

South section of National Highway 220 in Quanpu Town Industrial Park, Lingshan County, Jining City, Shandong Province

Type	water-cooled, four strokes, 6 cylinders in line, turbocharged, directly injection
Kind of Fuel	Diesel
Fuel Consumption(L/100km)	25L/100km
Clutch & Gear Box System	
Clutch	SINOTRUKΦ430mm diaphragm spring clutch
Gear Box	HW19710
Axles	
Front Axle Model	VGD95 axle. Capacity: 9000kg
Rear Axle	HC16 axle. Capacity:2X 16000kg
Ratio of rear axle	4.8
Electrical System	
Battery	2X12V/165Ah
Alternator	28V-1500kw
Starter	7.5Kw/24V
Brake System	
Service brake	Dual circuit compressed air brake
Parking brake	spring energy, compressed air operating on rear wheels
Auxiliary brake	Engine exhaust brake
Steering system	
Model	ZF8118
Type	hydraulic steering with power assistance
Wheels & Tyres	
Type	1200R20
Material	Steel tires
Quantity	10+1 spare
Kin pin	50mm or 90mm
Cabin	
Type	HW76 Standard cabin
single sleeper with air conditioner, all-steel forward control,55°hydraulically tiltable to the front,2-arm windscreen wiper system with three speeds, laminated windscreen with casted-in radio aerial, hydraulically damped adjustable driver's seat and rigid adjustable co-driver's seat, with heating and ventilating system, outer sun visor, adjustable roof flap, with stereo radio/cassette recorder, safety belts and adjustable steering wheel, air horn, with 4-point support fully floating suspension and shock absorbers	



山东昌润达汽车科技有限公司

Shandong Changrunda Automotive Technology Co., Ltd

South section of National Highway 220 In Quanpu Town Industrial Park, Llangshan County, Jining City, Shandong Province

## HOWO 6x4 DUMP TRUCK 400HP



### SPECIFICATION

VEHICLE SPECIFICATION	DESCRIPTION
Truck Model	ZZ3257S3647W
Truck Brand	SINOTRUK—HOWO
Driving Position	<b>Rght /Left hand Driving</b>
Fuel tanker capacity (L)	300
The Total Mass	35,000kg
Cargo box	5600x2300x1500 mm
Box thickness	Boot 8mm side 6mm
Dead Weight	12300kg
Hydraulic Jack	Front / Mid Lift
Max speed (km/h) (km/h)	102
Color	Optional
<b>Chassis &amp; Add Components</b>	
Frame Details	High-Strength U-profile ladder frame with section of 300*90*8mm and reinforced sudfram, all cold riveted cross members.
Dimension(Lx W xH) (mm)	8685x2496x3850
Overhang(front/rear) (mm)	1500/725



山东昌润达汽车科技有限公司

Shandong Changrunda Automotive Technology Co., Ltd

South section of National Highway 220 in Quanpu Town Industrial Park, Liangshan County, Jining City, Shandong Province

Wheel base (mm)	3625+1350
<b>Engine</b>	
Model	WP12.400E201
Power	400hp/296kw.2000r/min
Emission	EURO II
Displacement(L)	11.896
Type	water-cooled, four strokes, 6 cylinders in line, turbocharged, directly injection
Kind of Fuel	Diesel
Fuel Consumption(L/100km)	25L/100km
<b>Clutch &amp; Gear Box System</b>	
Clutch	SINOTRUKΦ430mm diaphragm spring clutch
Gear Box	HW19710
<b>Axles</b>	
Front Axle Model	VGD95 axle, Capacity: 9000kg
Rear Axle	HC16 axle, Capacity:2X 16000kg
Ratio of rear axle	4.8
<b>Electrical System</b>	
Battery	2X12V/165Ah
Alternator	28V-1500kw
Starter	7.5Kw/24V
<b>Brake System</b>	
Service brake	Dual circuit compressed air brake
Parking brake	spring energy, compressed air operating on rear wheels
Auxiliary brake	Engine exhaust brake
<b>Steering system</b>	
Model	ZF8118
Type	hydraulic steering with power assistance
<b>Wheels &amp; Tyres</b>	
Type	1200R20
Material	Steel tires
Quantity	10+1 spare
Kin pin	50mm or 90mm
<b>Cabin</b>	
Type	HW76 Standard cabin
single sleeper with air conditioner, all-steel forward control,55°hydraulically tiltable to the front,2-arm windscreen wiper system with three speeds, laminated windscreen with casted-in radio aerial, hydraulically damped adjustable driver's seat and rigid adjustable co-driver's seat, with heating and ventilating system, outer sun visor, adjustable roof flap, with stereo radio/cassette recorder, safety belts and adjustable steering wheel, air horn, with 4-point support fully floating suspension and shock absorbers	

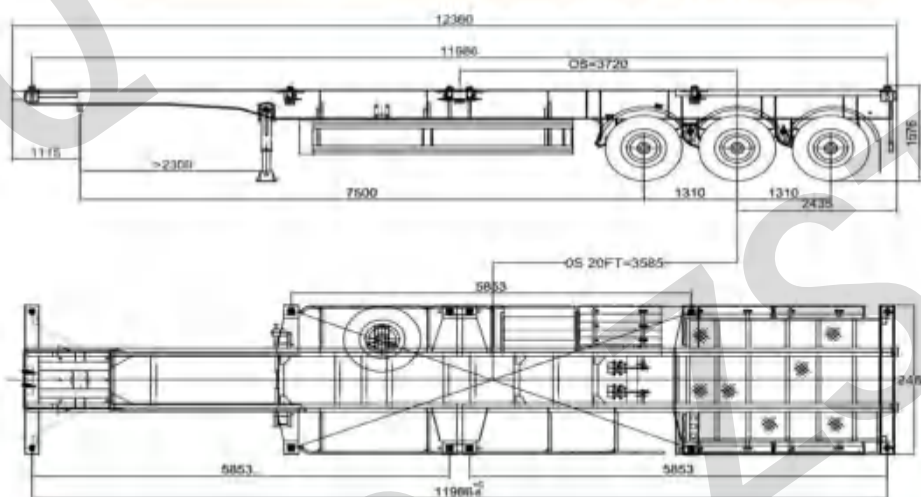


山东昌润达汽车科技有限公司

Shandong Changrun Automotive Technology Co., Ltd

South section of National Highway 220 in Qianpu Town Industrial Park, Lingshan County, Jining City, Shandong Province

### 3 Axles 40FT Skeleton Semi Trailer

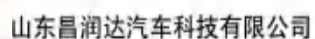


Specifications	
Dimension	12.38m×2.48m×1.55m (Outside)
Payload	50T
Tare weight	About 6.5T
Twist lock	12 units
Chassis	
Main beam	Heavy duty and extra durability designed I beam; Opting for high tensile steel Q345B, welded by automatic Submerged-Arc processes.
Frame Beam	Top Flange 14mm,width 140mm; Middle Flange 8mm; Bottom Flange 16mm,width 140mm, main beam height 500mm
Axle	3 axles, 13Ton Fuwa brand 16ton brake pads
Landing Gear	28T lifting capacity with two speed
King Pin	2.00 or 3.5 inch bolt-in king pin
Suspension	Mechanical suspension reinforced type
Leaf Spring	90mm(W)*13mm(T)*10 Layer
Pneumatic	Dual line pneumatic brake system,T30 air chamber ,40L air tanks, Emergency relay valve

Concentric Share Win-win Grateful for you

Every trust must not be disappointed

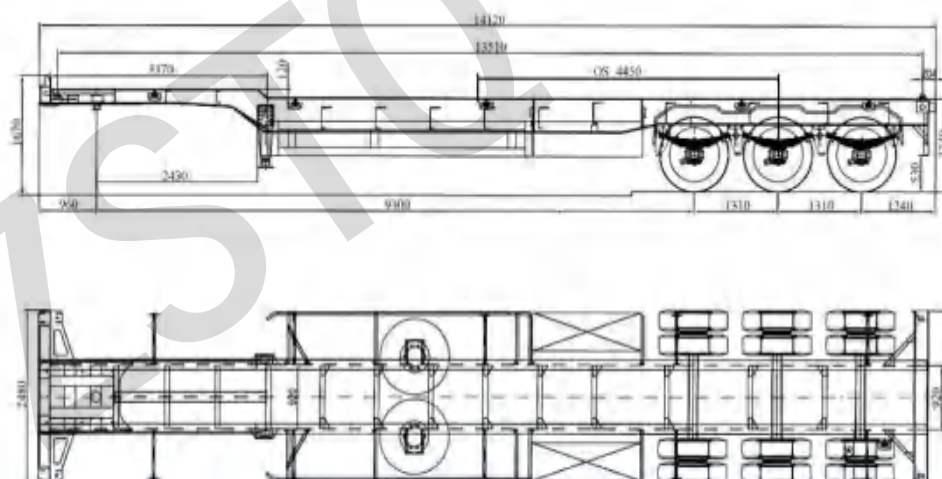
7



Shandong Changrunda Automotive Technology Co., Ltd

outh section of National Highway 220 in Quanpu Town Industrial Park, Liangshan County, Jining City, Shandong Province

### 3 Axles 45FT Skeleton Semi Trailer



Concentric    Share    Win-win    Grateful for you

### Every trust must not be disappointed



山东昌润达汽车科技有限公司

Shandong Changrunda Automotive Technology Co., Ltd

outh section of National Highway 220 In Quanpu Town Industrial Park, Llangshan County, Jining City, Shandong Province

Dimension	14.12m×2.48m×1.55m (Outside)
Payload	50T
Tare weight	About 7.5T
Twist lock	12 units
Chassis	
Main beam	Heavy duty and extra durability designed I beam; Opting for high tensile steel Q345B, welded by automatic Submerged-Arc processes.
Frame Beam	Top Flange 14mm,width 140mm; Middle Flange 8mm; Bottom Flange 16mm,width 140mm, main beam height 380mm
Axle	3 axles, 13Ton Fuwa brand 16ton brake pads
Landing Gear	28T lifting capacity with two speed
King Pin	2.00 or 3.5 inch bolt-in king pin
Suspension	Mechanical suspension reinforced type
Leaf Spring	90mm(W)*13mm(T)*10 Layer
Pneumatic Braking System	Dual line pneumatic brake system,T30 air chamber ,40L air tanks, Emergency relay valve
Rim	9.0-20*12 pcs
Tire	12R22.5*12 pcs ,
Accessories	One standard tool box
Spare tire rack	One
Electrical system	24 volt electrical system,7 pin electrical connector, Parking stop, reverse, number plate and indicator lights. rear lights conform to European standard, rear front and side reflectors
Painting	Complete Chassis sand blasting to clean rust, 1 coat of anticorrosive prime, 2 coats of final paint
Shipping Terms	By Bulk Cargo/RORO/40HQ container

Dock skeleton semi-trailer

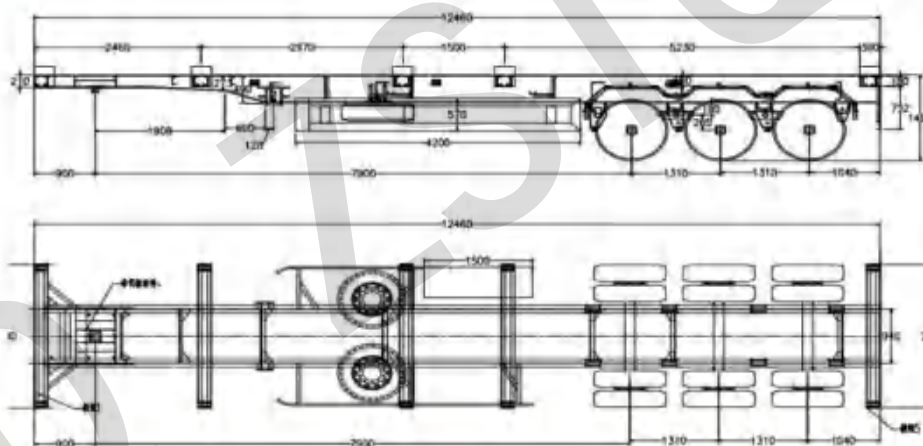




山东昌润达汽车科技有限公司

Shandong Changrunda Automotive Technology Co., Ltd

South section of National Highway 220 in Quanpu Town Industrial Park, Liangshan County, Jining City, Shandong Province



Specifications	
Dimension	12.85m×2.61m×1.55m (Outside)
Payload	50T
Tare weight	About 7T
Chassis	
Main beam	Heavy duty and extra durability designed I beam; Opting for high tensile steel Q345B, welded by automatic Submerged-Arc processes.
Frame Beam	Top Flange 14mm,width 140mm; Middle Flange 8mm; Bottom Flange 16mm,width 140mm, main beam height 480mm
Axle	3 axles, 13Ton Fuwa brand 16ton brake pads
Landing Gear	28T lifting capacity with two speed
King Pin	2.00 or 3.5 inch bolt-in king pin
Suspension	Mechanical suspension reinforced type
Leaf Spring	90mm(W)*13mm(T)*10 Layer
Pneumatic Braking System	Dual line pneumatic brake system,T30 air chamber ,40L air tanks, Emergency relay valve
Rim	9.0-20*12 pcs
Tire	12R22.5*12 pcs
Accessories	One standard tool box
Spare tire rack	One
Electrical system	24 volt electrical system.7 pin electrical connector. Parking stop, reverse, number plate and indicator lights, rear lights conform to European standard, rear front and side reflectors
Packing and shipping	
Painting	Complete Chassis sand blasting to clean rust, 1 coat of anticorrosive prime, 2 coats of final paint
Shipping Terms	By Bulk Cargo/RORO/40HQ container

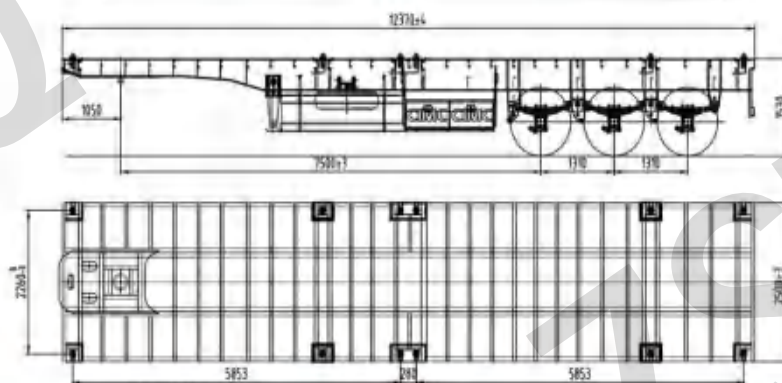


山东昌润达汽车科技有限公司

Shandong Changrunda Automotive Technology Co., Ltd

South section of National Highway 220 in Quanpu Town Industrial Park, Liangshan County, Jining City, Shandong Province

### Tri-axle Flatbed Semi-trailer



Specifications	
Dimension	12.4m×2.61m×1.55m (Outside)
Payload	50T
Tare weight	About 7T
Twist lock	12units
Chassis	
Main beam	Heavy duty and extra durability designed I beam; Opting for high tensile steel Q345B, welded by automatic Submerged-Arc processes.
Frame Beam	Top Flange 14mm,width 140mm; Middle Flange 8mm; Bottom Flange 16mm,width 140mm, main beam height 480mm
Frame Floor	The Thickness is 3mm pattern
Axle	3 axles, 13Ton Fuwa brand 16ton brake pads
Landing Gear	28T lifting capacity with two speed
King Pin	2.00 or 3.5 inch bolt-in king pin
Suspension	Mechanical suspension reinforced type
Leaf Spring	90mm(W)*13mm(T)*10 Layer
Pneumatic Braking System	Dual line pneumatic brake system,T30 air chamber ,40L air tanks, Emergency relay valve
Rim	9.0-20*12 pcs
Tire	12R22.5*12 pcs



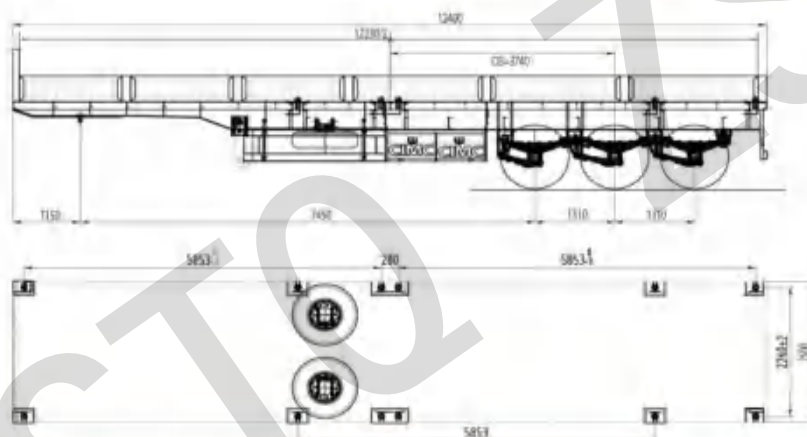
山东昌润达汽车科技有限公司

Shandong Changrunda Automotive Technology Co., Ltd

South section of National Highway 220 in Quanpu Town Industrial Park, Liangshan County, Jining City, Shandong Province

Accessories	One standard tool box
Spare tire rack	One
Electrical system	24 volt electrical system.7 pin electrical connector. Parking stop, reverse, number plate and indicator lights, rear lights conform to European standard, rear front and side reflectors
Packing and shipping	
Painting	Complete Chassis sand blasting to clean rust, 1 coat of anticorrosive prime, 2 coats of final paint
Shipping Terms	By Bulk Cargo/RORO/40HQ container

Tri-axle cargo semi-trailer



Specifications	
Dimension	12.4m×2.61m×1.55m (Outside)
Payload	50T
Tare weight	About 7.5T
Box Body Dimension	12280mm*2300mm*600mm
Box Body	Floor steel sheet 2.5mm, side wall steel sheet 1.2mm
Twist lock	12units
Chassis	
Main beam	Heavy duty and extra durability designed I beam; Opting for high tensile steel Q345B,

Concentric Share Win-win Grateful for you

Every trust must not be disappointed

12

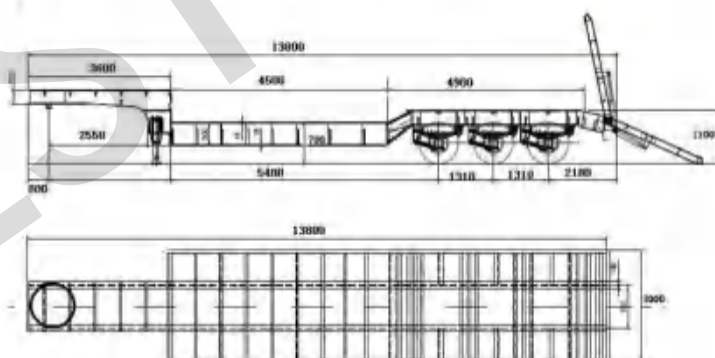


山东昌润达汽车科技有限公司

Shandong Changrun Automobile Technology Co., Ltd

South section of National Highway 220 in Quanpu Town Industrial Park, Uiangshan County, Jining City, Shandong Province

	welded by automatic Submerged-Arc processes.
<b>Frame Beam</b>	Top Flange 14mm,width 140mm; Middle Flange 8mm; Bottom Flange 16mm,width 140mm, main beam height 480mm
<b>Frame Floor</b>	The Thickness is 3mm pattern
<b>Axle</b>	3 axles, 13Ton Fuwa brand 16ton brake pads
<b>Landing Gear</b>	28T lifting capacity with two speed
<b>King Pin</b>	2.00 or 3.5 inch bolt-in king pin
<b>Suspension</b>	Mechanical suspension reinforced type
<b>Leaf Spring</b>	90mm(W)*13mm(T)*10 Layer
<b>Pneumatic Braking System</b>	Dual line pneumatic brake system,T30 air chamber ,40L air tanks, Emergency relay valve
<b>Rim</b>	9.0-20*12 pcs
<b>Tire</b>	12R22.5*12 pcs
<b>Accessories</b>	One standard tool box
<b>Spare tire rack</b>	One
<b>Electrical system</b>	24 volt electrical system.7 pin electrical connector. Parking stop, reverse, number plate and indicator lights. rear lights conform to European standard, rear front and side reflectors
<b>Packing and shipping</b>	
<b>Painting</b>	Complete Chassis sand blasting to clean rust, 1 coat of anticorrosive prime, 2 coats of final paint
<b>Shipping Terms</b>	By Bulk Cargo/RORO/40HQ container



Concentric Share Win-win Grateful for you

Every trust must not be disappointed

13

**Low-bed Semi-trailer**

Specifications	
Dimension(L x W x H) (mm)	13000*3000*3300
Curb Weight(KG)	9500
Loading Weight( KG)	60000
Total Weight(KG)	69500
Departure Angle	16
Axle Brand	16TON Axle
Axle Number	3
Wheelbase (mm)	8580+1310+1310
Suspension system	Mechanical suspension
Steel Spring	10/10/10
Frame	The height of the beam is 500mm, upper plate is 20mm, down plate is 20mm, middle plate is 12mm, according to the buyer's requirement
Platform plate	4mm Diamond Plate
Tire Type and quantity	1100R20 12units
Traction Pin	50mm or 90mm
Spare Wheel Bracket	2 pieces
Tool Box	1 Unit
Landing Leg	28T load landing leg
Brake system	Dual Line braking system, none ABS.
Brake air chamber	6 air chambers
Electrical system	24V, 7 Pole plug
	Tail lamp with turn signal, brake light & reflector, side lamp etc.
	One set 6-core standard Cable.
Side Guard	None
Painting	Color by customer's requirement
Packing	Polish with wax before shipping
Delivery way	Transfer to China port, and carry by ro-ro ship, the freight cost depends on the volume.

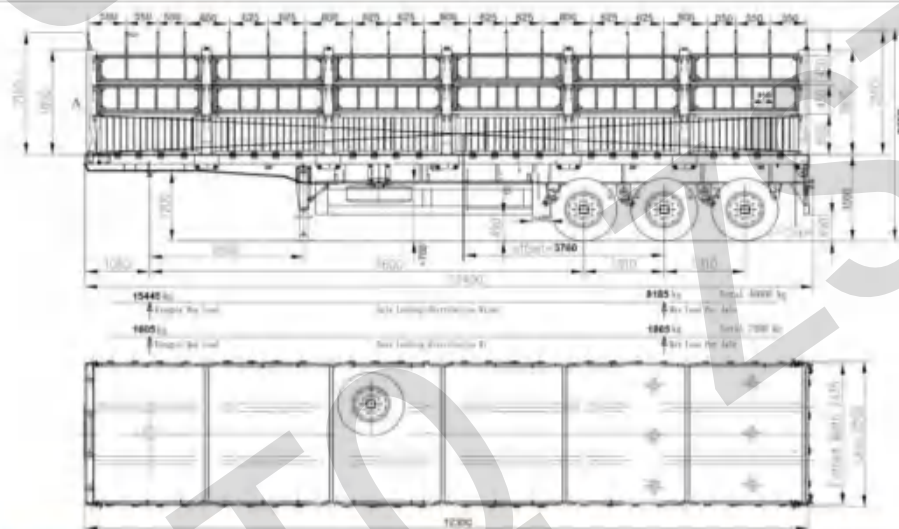


山东昌润达汽车科技有限公司

Shandong Changrunda Automotive Technology Co., Ltd

South section of National Highway 220 in Qianpu Town Industrial Park, Liangshan County, Jining City, Shandong Province

## Cargo transport semi trailer



DIMENSIONS	
Tare weight	6500kg
Payload	38500 kg
Overall length	12400mm
Overall width	2500mm
Overall height	3650mm
SPECIFICATION	
Chassis	Top flange 10mm, width140mm; Middle Flange 8mm; bottom flange10mm, width 140mm, height 480mm.
Axle	Fuwa 13T
Suspension	Mechanical suspension



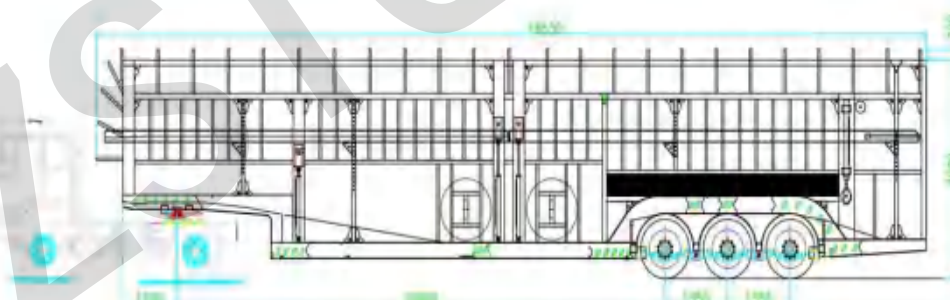
山东昌润达汽车科技有限公司

Shandong Changrunda Automotive Technology Co., Ltd

South section of National Highway 220 in Quanpu Town Industrial Park, Liangshan County, Jining City, Shandong Province

Leaf spring	10pcs Leaf spring 90mm*11mm*10pcs
Wheelbase	7900+1310+1310
Floor	2.5mm T700
Tire	11.00R20 18PR triangle brand 13
Wheel rim	8.0-20 Better brand
Kingpin	3.5" bolt-in king pin
Landing gear	SAF brand two-speed, manual operating ,heavy duty landing gear 28t
ABS	4S/2M
Braking system	WABCO RE6 relay valve ;T30/30 spring brake chamber;40L air tanks
Spare tire carrier	1pcs 1 个
Tool box	1pcs 1 个
Painting	Complete chassis sand blasting to clean rust ,1coat of anticorrosive prime,2coats of final paint
Accessories	one rocker handle one Shaft wrench

### Car Carrier Semi-trailer



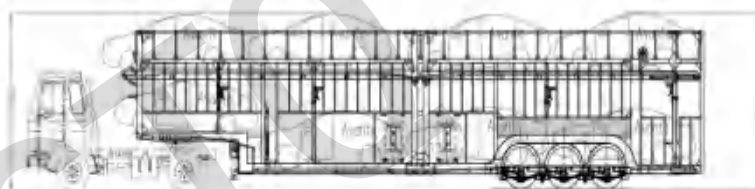


山东昌润达汽车科技有限公司

Shandong Changrunda Automotive Technology Co., Ltd

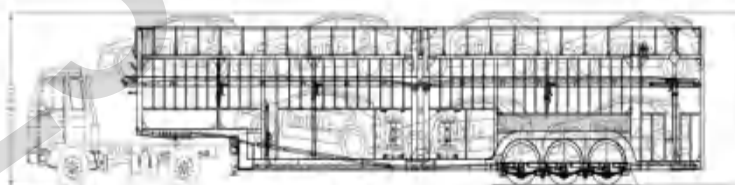
South section of National Highway 220 in Qianpu Town Industrial Park, Liangshan County, Jining City, Shandong Province

DIMENSIONS			
Overall Dimension (L* W *H)	18560mm*2600mm*3950mm		
King pin setting	1590mm	Wheelbase	10850mm+1350mm
Ground clearance	200mm	Track	2203mm
Height of loading surface	435mm		
<b>Running Gear</b>			
Suspension	Mechanical suspension with 3-pcs leaf spring		
Hubs	Cast steel 10 studs		
Rim & Tire	Rim 9.0-22.5, 6 units tire 12.R22.5,		
Axles	3 units AQ 10T concave axles		
Brakes	Dual lines pneumatic brake system, 30/30 chambers, air-actuated		
<b>Under Frame</b>			
Main Beam	I shape, Mild Alloy ( 16Mn ) by Automatic submerged arc welding, welded on left and right sides		
Cross beam	Mild Alloy Q235		
King pin	50# (2") welded on plate (optional 90# )		
Landing Gear	Static capacity 15Ton		
<b>Body</b>			
Lifting type of upper floor	Hydraulic and manual lifting mechanism		
Quantity of carried cars	8 units (4m per car)		
<b>Electrical &amp; Paint</b>			
Lights & Reflectors	Rear light, rear reflector, turn indicative light, side reflector, fog lamp, number plate light		
Wiring	24V, 6 lines		



Side View (mm)

Technical drawing showing side view of the vehicle chassis and body structure.



Front View (mm)

Technical drawing showing front view of the vehicle chassis and body structure.

### 3 AXLES DUMP TRAILER

Concentric Share Win-win Grateful for you

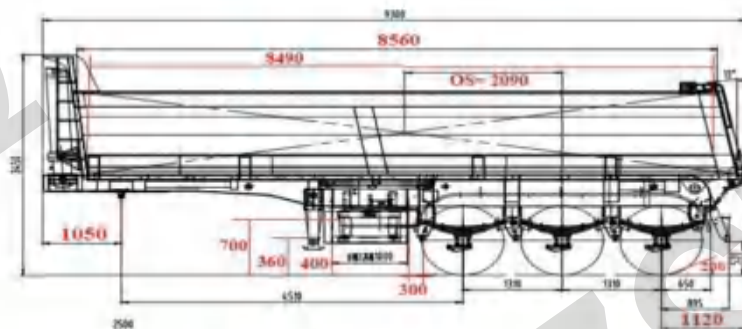
Every trust must not be disappointed



山东昌润达汽车科技有限公司

Shandong Changrun Automotive Technology Co., Ltd

South section of National Highway 220 in Quanpu Town Industrial Park, Liangshan County, Jining City, Shandong Province



DIMENSIONS	
Tare Weight	about 8T
Thickness	Floor3mm ,side3mm    stainless steel
Material	high tensile steel
Brake Chamber	28T
Landing Gear	Six double big chamber
Dimension	9000*2500*3800mm
Axle	13tons fuhua brand , 3 axles
Box size	9000*2300*1200mm
Loading Capacity(cbm)	25cbm
King Pin	JOST  2" inch bolt-in king pin
Suspension	Mechanical suspension
Leaf Spring	10pcs leaves
Braking System	Brake System Dual Line
Rim	9.00-22.5  12pieces
Tire	12R22.5  Triangle Brand 12 pieces
Painting	Customer-specific
Hydraulic cylinder	One set of Hydraulic



山东昌润达汽车科技有限公司

Shandong Changrunda Automotive Technology Co., Ltd

South section of National Highway 220 in Quanpu Town Industrial Park, Liangshan County, Jining City, Shandong Province

### Three Axle Dump Semi-trailer



DIMENSIONS	
Tare Weight	about 9T
Thickness	Floor 4mm ,side 4mm
Material	High tensile steel T700
Brake ChamberLanding Gear	28T
	Six double big chamber
Dimension	9800*2500*3800mm
Axle	13tons FUWA brand , 3 axles
Box size	9500*2350*1500mm
Loading Capacity(cbm)	34cbm
King Pin	JOST 2 or 3.5 inch bolt-in king pin
Suspension	Mechanical suspension
Leaf Spring	10pcs leaves
Braking System	Brake System Dual Line
Rim	8.50-20 12pieces
Tire	1200R20 Triangle Brand 12 pieces
Painting	Customer-specific
Hydraulic cylinder	φ 196 hydraulic Cylinder

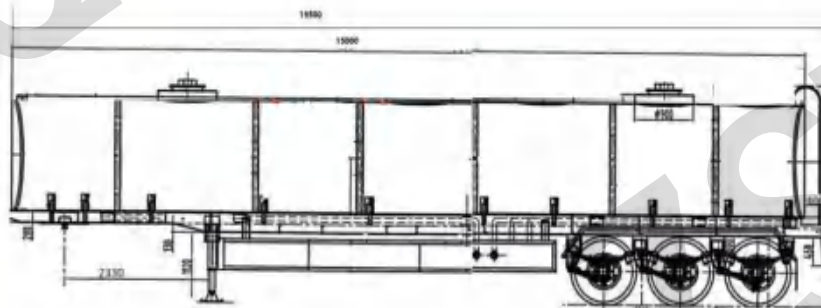


山东昌润达汽车科技有限公司

Shandong Changrunda Automotive Technology Co., Ltd

South section of National Highway 220 in Qianpu Town Industrial Park, Lingshan County, Jining City, Shandong Province

### 3 axle oil tanker semi trailer



SPECIFICATIONS	
Product Name: 3 axle oil tanker semi trailer	
Over Dimensions: 11500*2500*3900mm	
<b>Steel Structure</b>	
Material	Q235 Steel
Frame	Main beam height is 500mm
Frame Beam	Upper plate is 14mm,down plate is 16mm,middle plate is 6mm
Landing Gear	Chinese brand 28 Tons
subsea valve	2
oil valve	2
<b>Tanker</b>	
Volume	45 CBM
Body Thickness	6mm
Front/End Plate	6mm
Compartments	2 compartments
<b>Specification</b>	
Axle Brand	13TON Axle,
Axle Number	Three

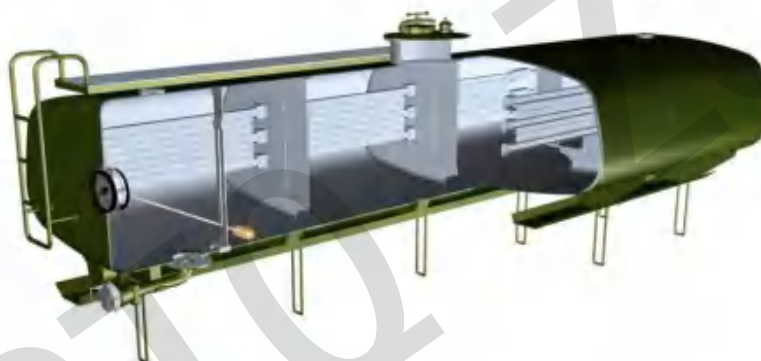


山东昌润达汽车科技有限公司

Shandong Changrun Automotive Technology Co., Ltd

South section of National Highway 220 in Quanpu Town Industrial Park, Liangshan County, Jining City, Shandong Province

Suspension System	Mechanical suspension
Steel Spring	10/10/10 leaf spring suspension
Rim	9.0-22.5
<b>Tire</b>	
Tire Type and Quality	12R22.5 ,12 units
Number of Tire	12 pieces
Spare Wheel Bracket	1 pieces
<b>Brake</b>	
Brake System	Dual line braking system
Brake Chamber	Four Double and two single chamber, optional WABCO
<b>Electrical System</b>	
Cable	One set 6-core standard Cable.
Voltage	24V
Receptacle	7 ways(7 wire harness)
Light	Tail lamp with turn signal,brake light&reflector,side lamp etc.
<b>Miscellaneous</b>	
Side Guard	With
Painting&Marking	According to customers' requirement





山东昌润达汽车科技有限公司

Shandong Changrun Automotive Technology Co., Ltd

South section of National Highway 220 in Qianpu Town Industrial Park, Liangshan County, Jining City, Shandong Province

### Fuel Tank Truck



#### SPECIFICATION

Product Name	Sinotruk HOWO 6*4 oil tanker truck
<b>Description</b>	
Truck Model	ZZ1257V4647
Driving Position	Left hand Driving
Fuel tanker capacity (L)	300
Dead Weight	13700kg
Wheelbase (mm)	5225+1350
Color	White
<b>Tanker</b>	
Tank capacity	20000 liters
Material	Q235 Carbon Steel
Body	Body thickness:5mm front/rear plate:6mm
Compartment	2 10m <sup>3</sup> +10m <sup>3</sup>
Manhole	2 European standard
Bottom Valve	2
Discharge Valve	2
Lifting Ladder	Including Top walkway and backside
<b>Engine</b>	
Model	WP400E201
Power	400hp
Emission	EURO II, water-cooled, four strokes, 6 cylinders in line, directly injection
Kind of Fuel	Diesel
Fuel Consumption(L/100km)	25L/100km
Transmission Type	HW 19710 Manual
Clutch	Reinforced diaphragm clutch, Diameter 430mm



Steering System	ZF8098,Power steering
<b>Gear oil pump</b>	
Model	76YCB-40(F)
flux m <sup>3</sup> /h	40
In/out cabiber mm	76
RPM r/min	960
Metering system	LC-40 Return to Zero 3" discharging system
<b>Axles</b>	
Front Axle Model	VGD95 axle. Capacity: 7000kg
Rear Axle	HC16 axle Capacity: 16000kg
<b>Wheels &amp; Tyres</b>	
Type	12R22.5 New
Material	Tubeless tires
Quantity	10 +1spare
<b>Brake System</b>	
Service brake	Dual circuit compressed air brake
Parking brake	spring energy, compressed air operating on rear wheels
Auxiliary brake	Engine exhaust brake
<b>Electrical System</b>	
Battery	2X12V/165Ah
Alternator	28V-1500kw
Starter	7.5Kw/24V
<b>Cabin</b>	
Type	HW76 Cabin
One sleeper with air conditioner, all-steel forward control, 55° hydraulically tiltable to the front, 2- arm windscreen wiper system with three speeds, laminated windscreen with casted-in radio aerial, hydraulically damped adjustable driver' s seat and rigid adjustable co-driver' s seat, with heating and ventilating system, outer sun visor, adjustable roof flap, with stereo radio/cassette recorder, safety belts and adjustable steering wheel, air horn, with 4-point support fully floating suspension and shock absorbers	
<b>Other</b>	
102km/h speed limiter; 2 fire extinguisher; English plate;Tool box	





山东昌润达汽车科技有限公司

Shandong Changrun Automotive Technology Co., Ltd

South section of National Highway 220 in Quanpu Town Industrial Park, Liangshan County, Jining City, Shandong Province

### Bulk Cement Tank Semi-trailer



<b>Weight:</b>	
Tare Weight	10000kg
Loading Capacity	45 m <sup>3</sup>
Axle Weight Load	13T
<b>Specification:</b>	
Axle number	3
Axle Brand	FUWA
Suspension	Common mechanical
King Pin	2" or 3.5" traction pin
Dimensions (LxWxH)	10500*2500*3500mm
Support legs	28T
Wheel Rim	9.0-22.5
Wheelbase	6260+1310+1310mm
Steel Spring	10 pieces per axle
Tank body & end	Q235/4mm steel&6mm steel sheet Shape:V type
Engine	Diesel engine:weichai brand model:4102,44 KW
Discharge valve & pipe	4" disc valve&4" seamless steel tube
Air-charging system	2" main hole, 2" check valve,1.5" safe valve,0.4Mpa.gauge
Quadratic blow	1" diameter check valve
Discharge cover	2-4 sets of 100mm discharge valves
Landing Gear	Manual operating, Heavy duty landing gear (Brand Optional)
Manhole cover	500mm manhole cover 2 sets with 2 breather valve
Accessories	1 Set standard tool box
Light	Tail lamp with turn signal, brake light & reflector, side lamp etc.
Painting	1coat of anti corrosive primer, twice coats of final paint
<b>Tire:</b>	
Tire spe.	12R22.5 Or 11R22.5
Number of Tire	12 pieces
Spare Tire Carriers	2 pieces
<b>Frame: (specs. and materials)</b>	
Main beam	The height of the beam is 500mm;



山东昌润达汽车科技有限公司

Shandong Changrunda Automotive Technology Co., Ltd

South section of National Highway 220 in Quanpu Town Industrial Park, Liangshan County, Jining City, Shandong Province

	Down plate is 16mm;Middle plate is 8mm.
Tank body	5mm steel plate, head and back head made of 6mm steel plate the shape can be column or TV square shape
<b>Brake:</b>	
Brake Chamber	Six big chamber( Brand Optional )
Brake system	Dual Line Brake system (ABS Optional)

### Concrete Mixer Truck

#### HOWO Chassis 8/9/10/12cbm Concrete Mixer Truck



DESCRIPTION	
Truck Model	ZZ1257N3847
Type of Vehicle	10m3 Concrete Mixer Truck
Truck Brand	SINOTRUK—HOWO
Driving Position	Left hand Driving
Fuel tanker capacity L	300
The Total Mass	25,000kg
Dead Weight	12500
Max speed km/h km/h	90
Color	Optional
Chassis & Add Components	
Dimension Lx W xH unloaded mm	9653x2496x3940
Approaching angle/Departure angle °	16/30
Overhang front/rear mm	1500/1745
Wheel base mm	3800+1350
Engine	
Model	WP12.400E201
Brand	WEICHAI



Power	400HP
Emission	EURO II
Displacement L	11.826
Type	water-cooled, four strokes, 6 cylinders in line, turbocharged, directly injection
Kind of Fuel	Diesel
Fuel Consumption L/100km	20-30L/100km
Clutch & Gear Box System	
Clutch	SINOTRUKΦ430mm diaphragm spring clutch
Gear Box	HW19710 10 forwards and 2 reverse.
Brand	SINOTRUK
Axles	
Front Axle Model	VGD959 axle. Capacity: 9000kg
Rear Axle	HC16 axle. Capacity:2X 13000kg
Ratio of rear axle	4.42/4.80/5.73
Electrical System	
Battery	2X12V/165Ah
Alternator	28V-1500kw
Starter	7.5Kw/24V
Brake System	
Service brake	Dual circuit compressed air brake
Parking brake	spring energy, compressed air operating on rear wheels
Auxiliary brake	Engine exhaust brake
Steering system	
Model	ZF8118
Brand	German Brand
Type	hydraulic steering with power assistance
Wheels & Tyres	
Type	12.00R20
Material	Bias tires
Quantity	10+1 spare
Cabin	
Type	HW76
(single sleeping, with air-condition), all-steel forward control,55°hydraulically tiltable to the front, 2- arm windscreen wiper system with three speeds, laminated windscreen with casted-in radio aerial, hydraulically damped adjustable driver's seat and rigid adjustable co-driver's seat, with heating and ventilating system, outer sun visor, adjustable roof flap, with stereo radio/cassette recorder, safety belts and adjustable steering wheel, air horn, with 4-point support fully floating suspension and shock absorbers	
Body	
Agitating Capacity	12m3
Geometric Volume	18.6m3



山东昌润达汽车科技有限公司 Shandong Changrunda Automotive Technology Co., Ltd  
South section of National Highway 220 in Quanpu Town Industrial Park, Liangshan County, Jining City, Shandong Province

Drum rotation speed	0-14r/min
Feeding Speed	>3.5m <sup>3</sup> /min
Water Tank Volume	400L
Discharge Remain Ratio	<0.2%
Water supply	Pressing type

### FIRE TRUCK



Product Details			
Main Parameters		Chasis Parameters	
Gross weight (Kg)	16640	Chasis Brand	HOWO
Rated load (Kg)	6500	Drive Form	4X2/left hand drive
Curb weight (Kg)	9690	Engine model	6HK1-TCNG40
Cab seats	2+3/double row cabin	Number of wheels (mm)	6+2/8
Number of axles	2	Tire specification	9.00-20 16PR
Overall dimension(mm)	7830*2500*3360	Engine displacement (ml)	4580
Wheel base(mm)	4500	Engine power (kw/hp)	140/190
Water tank (ton)	6	Emission standard	Euro 6
Foam tank (ton)	2	Fuel	diesel
Front axle/Rear axle(ton)	6.5/11.5	Transmission gearbox	HowoHW90510C ten speed transmission
Water pump		Fire monitor	
Type	CB10/40	Type	PL32
Capacity	48L/s	Capacity	40L/s
Presssure	1.0MPa	Pressure	1.0MPa
Water intake time	≤45s (depth 7m)	Range	Water≥50m, Foam≥45m
Foam proportioner	Manual, mixing ratio 3%, 6%	Rotation angle	Level angle 360°, Pitch angle -30° ~70°
Standard configuration for Chassis			



山东昌润达汽车科技有限公司

Shandong Changrunda Automotive Technology Co., Ltd

South section of National Highway 220 in Qianpu Town Industrial Park, Liangshan County, Jining City, Shandong Province

Air conditioner, Direction assist, central lock, electrically-operated window, Steam brake, USB audio, Reversible cab



Truck with loading crane





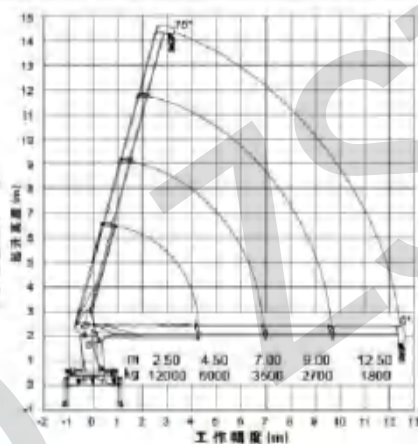
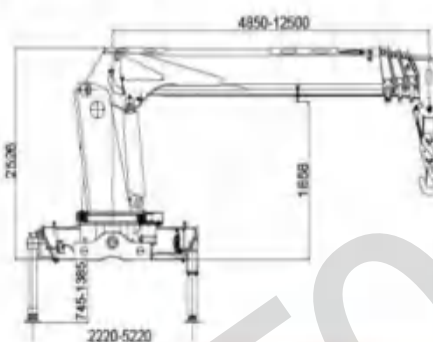
山东昌润达汽车科技有限公司

Shandong Changrunda Automotive Technology Co., Ltd

South section of National Highway 220 in Quanpu Town Industrial Park, Liangshan County, Jining City, Shandong Province

吊机的参数 Truck with loading crane	项目 ITEM	单位 UNITS	Crane model 吊机型号
			SQ12SK3Q
	最大起重质量 Max lifting capacity	KG	12000
	最大起重力 Max lifting capacity	T.M	30
	推荐功率 Recommend power	KW	30
	液压系统最大流量 Max oil flow	L/MIN	63
	液压系统额定压力 Max pressure	MPA	26
	油箱容积 Oil Tank Capacity	L	160
	起重机自重 Crane weight	KG	4200
	安装空间 Installation space	MM	1300
	回转角度 Rotation angle	DEGREE	360
	工作幅度 Extension length	MM	13000
	工作高度 Lifting height	MM	15000
	最大仰角 Max elevation	DEGREE	75

### SQ12SK3Q



Concentric Share Win-win Grateful for you

Every trust must not be disappointed



山东昌润达汽车科技有限公司 Shandong Changgrunda Automotive Technology Co., Ltd  
South section of National Highway 220 in Quanpu Town Industrial Park, Liangshan County, Jining City, Shandong Province

类别 Classify	项目 Items	参数 Parameters
底盘 参数	底盘型号 Model of chassis	CA1313P7K2L11T4A3E
	底盘生产厂家 Manufacturer	一汽长春
	整备质量(装上吊机后) kg Total weight	14770
	载质量(装上吊机后) kg Load capacity	16100
	最高车速 km/h Max speed	90
	外形尺寸(装上吊机后)mm Overall dimension	11980×2490×3560
	车厢尺寸(装上吊机后) mmCarriage dimension	8000×2300×600
	驾驶室准乘人数 Passengers	3
	轴距 mm Wheelbase	2150+4250+1350
	前/后轮距 mmDistance of front and rear wheels	1928/1928, 1847/1847
	驱动形式/轴数 Drive mode/Number of shafts	8X4/4
	接近/离去角 ° Approaching angle/Departure angle	18/12
	前/后悬 mm Front suspension/Rear suspension	1385/2855
	轮胎规格 Type of tire	11.00-20
发动机 参数	发动机型号 Model of engine	CA6DE3-24E3F
	发动机功率 Kw/Hp Power of engine	179/240
	发动机排量 ml Engine output volume	6618
	排放标准 Exhaust standard	国III
	发动机生产厂家 Motor manufacture	中国第一汽车集团公司